

# PLAT OF THE CENTRE

BEING A PARCEL OF LAND LYING  
IN SECTION 9, TOWNSHIP 38 SOUTH, RANGE 41 EAST  
CITY OF STUART MARTIN COUNTY, FLORIDA.

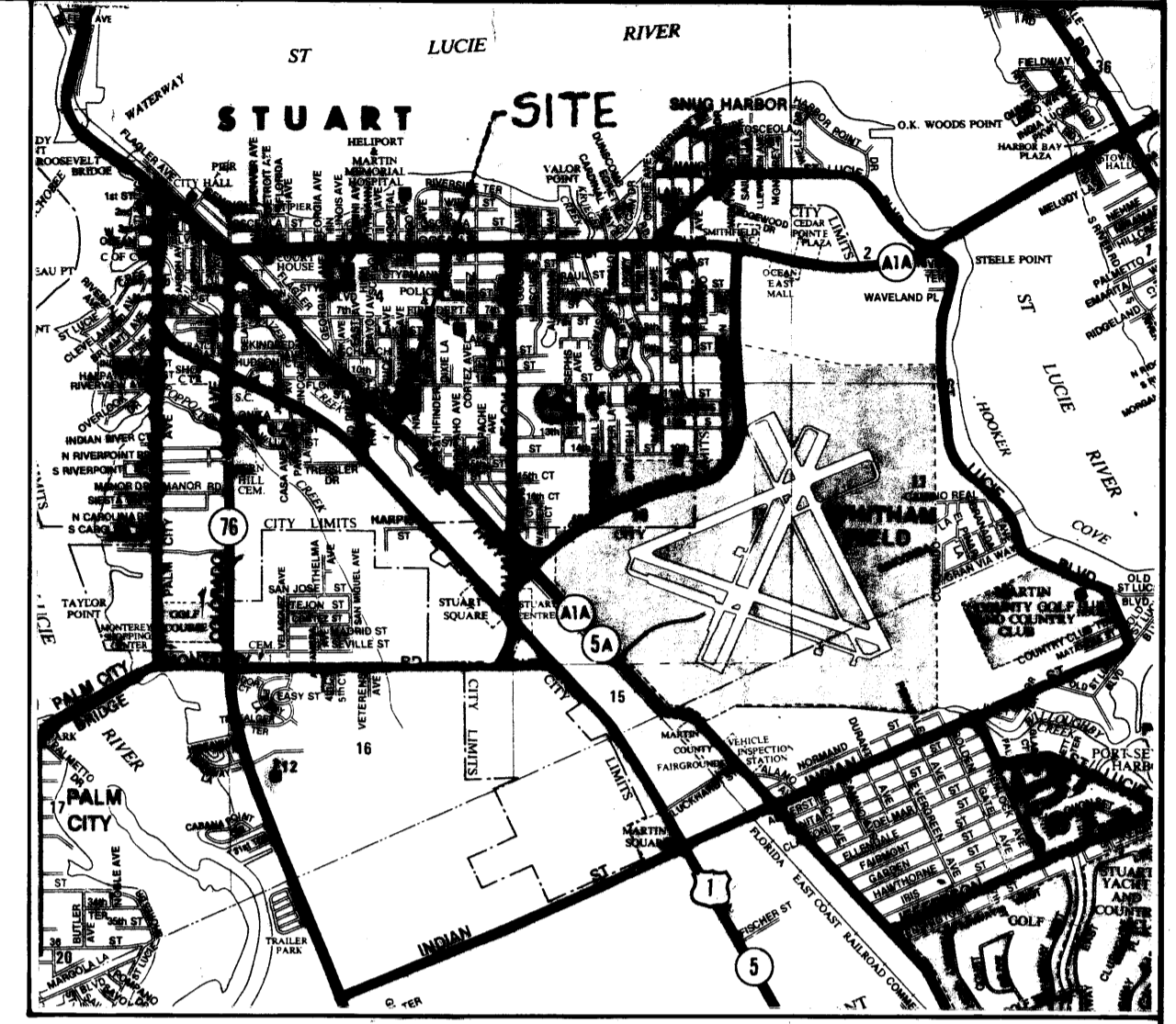
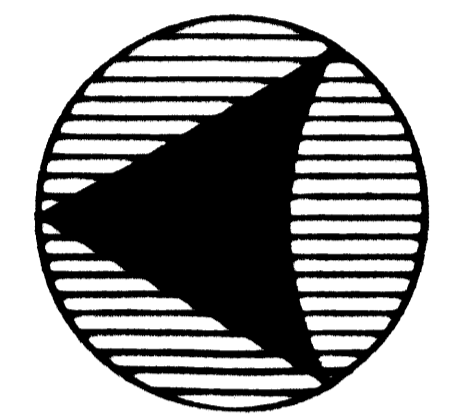
## CERTIFICATE OF APPROVAL OF THE CLERK OF THE CIRCUIT COURT

I, MARSHA STILLER, CLERK OF THE CIRCUIT COURT OF MARTIN COUNTY, FLORIDA,  
HEREBY CERTIFY THAT THIS PLAT WAS FILED FOR RECORD IN PLAT BOOK 11, PAGE  
26, MARTIN COUNTY, FLORIDA PUBLIC RECORDS, THIS    DAY OF     
1987, A.D.

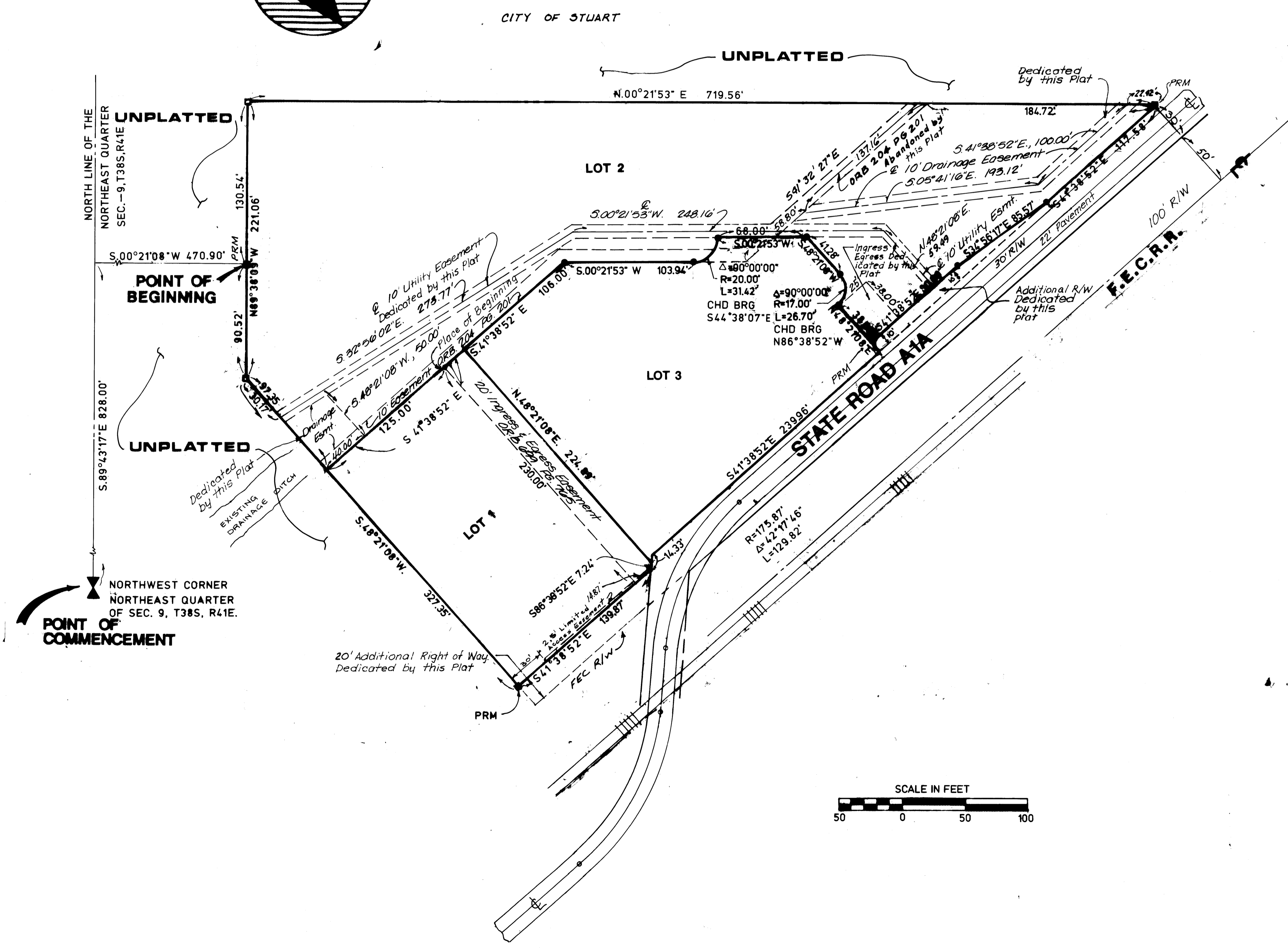
MARSHA STILLER, CLERK  
CIRCUIT COURT  
MARTIN COUNTY, FLORIDA

BY: \_\_\_\_\_  
DEPUTY CLERK

FILE NO. \_\_\_\_\_



LOCATION MAP



### SURVEYORS NOTES

- EXISTING CONCRETE MONUMENT
  - DENOTES PERMANENT REFERENCE MONUMENT
  - DENOTES PERMANENT CONTROL POINT
  - DENOTES IRON ROD WITH JAMES E NEUHAUS CAP
- BUILDING SETBACK LINES SHALL BE AS REQUIRED BY CITY OF STUART ZONING REGULATIONS.
- \* NO BUILDING OR ANY KIND OF CONSTRUCTION SHALL BE PLACED ON UTILITY OR DRAINAGE EASEMENTS.
- NO STRUCTURES, TREES OR SHRUBS SHALL BE PLACED ON DRAINAGE EASEMENTS.
- EASEMENTS ARE FOR PUBLIC UTILITIES UNLESS OTHERWISE NOTED.
- APPROVAL OF LANDSCAPING ON UTILITY EASEMENTS SHALL BE ONLY WITH THE APPROVAL OF ALL UTILITIES OCCUPYING SAME.
- BEARINGS REFERENCED TO THE NORTH LINE OF SECTION 9 TOWNSHIP 38 SOUTH RANGE 41 EAST WHICH IS S 89°43'17"E.
- NO IMPROVEMENTS OR UNDERGROUND ENCRDACHMENTS REFLECTED.